



Bicycles for Humanity



iEmpowerment

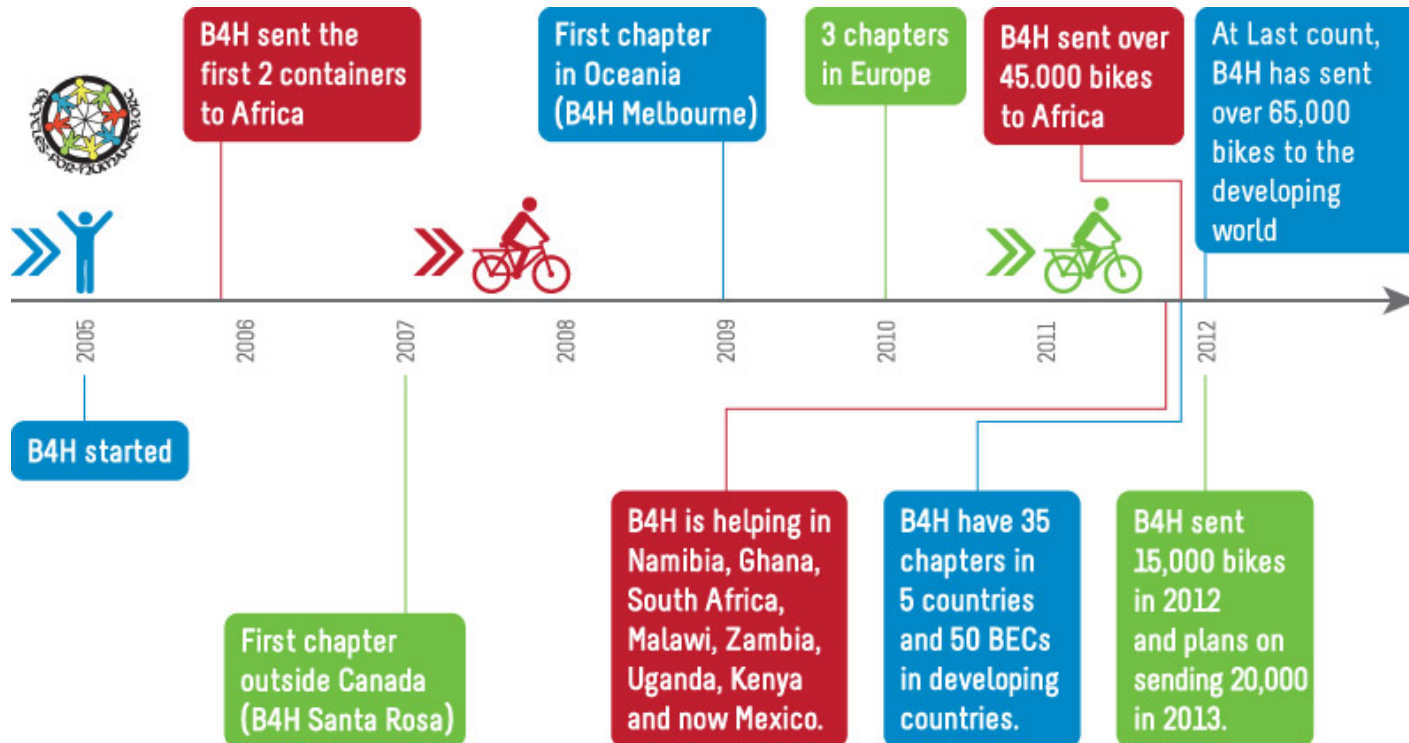


- ❑ A serial entrepreneur with Success in telecommunications, software and digital media
 - Technology Vision – a recognized innovator in the application of technologies to create business opportunities
- ❑ Started his first successful company, PBA in 1974 and then TSB, in 1978. Has completed listings on the TSX, CDNX (junior TSX) and NASDAQ exchanges for successful ventures.
- ❑ Pat is the founder of Bicycles for Humanity and iEmpowerment
- Pat is a graduate of Waterloo Lutheran University with a degree in economics.

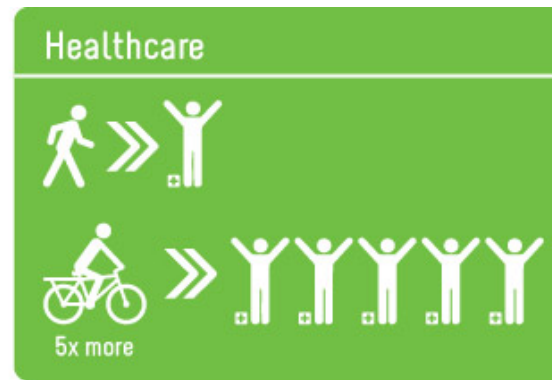
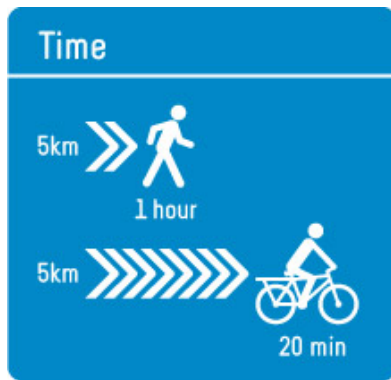
WHAT IS BICYCLES FOR HUMANITY



B4H is a pure 'grassroots' movement, with no paid staff or overhead, whose vast volunteer organization interacts with people in developing countries to empower those people with the mobility of a bicycle



Bicycles provide mobility giving people better access to education, healthcare, fresh water, economic opportunity and community.



Bicycles impact every aspect of a community. Jobs are created servicing the bikes, those with bikes can sell their products in distant markets, kids have more time to go to school, healthcare workers can see more patients, people can develop new businesses or extend their current business; example, people can get a better price for their goods, up to 3 times more, if they can get to market towns rather than sell to the traders who travel the back roads

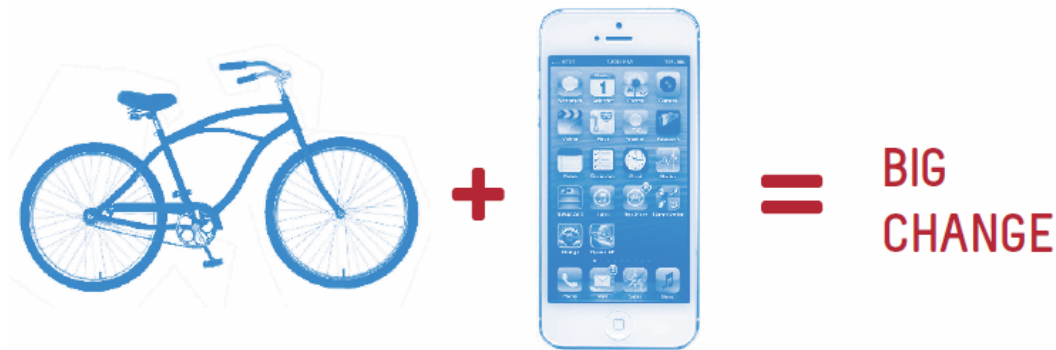
BICYCLE EMPOWERMENT CENTRE



The Benefits of Mobility and Job Creation

iEmpowerment is a company formed to provide tools that enable people in sub-Saharan Africa to work with resource companies, on shared value programs, in order to create sustainable employment while improving resource company success.

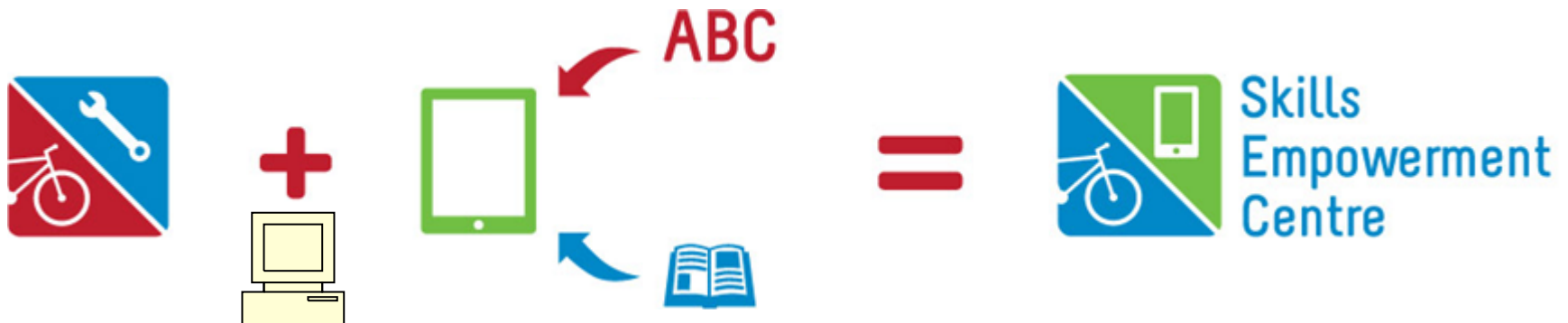
iEmpowerment is based on 10 years of experience in understanding what the local people want and need and how best to meet those needs and interface them to resource company requirements



Resource Companies + Local People sharing values = Success

iEmpowerment's SEC, A Technology Solution:

To educate and empower the people while generating revenue and employment thru inexpensive technology.



EDUCATE, EMPOWER, EMPLOY

Tablets enable the collection of community data about health, the environment and the myriad needs of the community.

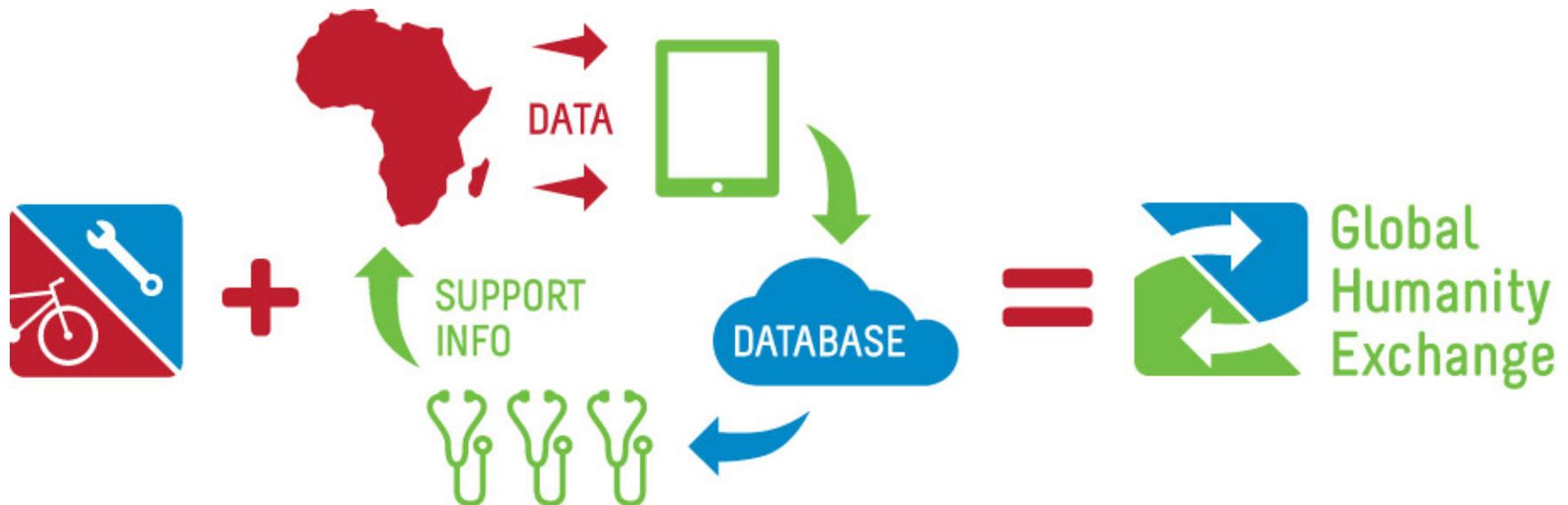
Tablets are also used to collect data of specific importance to corporations and foundations to aid their projects.



Empowerment and job creation

Evolving the BEC to a Skills Empowerment Centre and adding a telecommunications platform and a secure data repository to form the **Global Humanity Exchange**.

Enabling education, data collection, skills training, social projects and business opportunities



iEmpowerment has partners and very strong relationships with communities in Uganda, Kenya, South Sudan, Namibia, Angola and South Africa.

The people within these communities, once empowered, drive their own initiatives and this is iEmpowerment's objective.

iEmpowerment is providing the products, local relationships and process for resource companies to establish successful Corporate responsibility programs thru shared values.

The Key is Local Partner Involvement

- These are often perceived as:
 - Nebulous
 - Vague
 - Hard to understand
 - Difficult to implement
- The questions arise:
 - How much will it cost
 - What gains are we expecting
 - How do we implement it
 - How do we manage it



iEmpowerment

Makes this Easy

❑ Local Partners

- Buy in assured
- Implementation and training

❑ SEC

- Computers , routers, tablets, integration
- Educational Application Installation
- Tablet database front end and database application installation
- Training and support

❑ BICYCLES

- Rugged, corporate colours and logos
- Crates of 100, broken down
- Training on assembly and maintenance

❑ GHX

- Secure database for aggregated information
- Access to information for NGO's, Corporations, Government

❑ Mobilize

- Rolling bill board – showing commitment
- Get people back and forth to work and school
- Carry out corporate projects with SEC tablet
 - E.g., train workers to look for specific geological formations, database and GPS them, water sources, animal herds

❑ Educate:

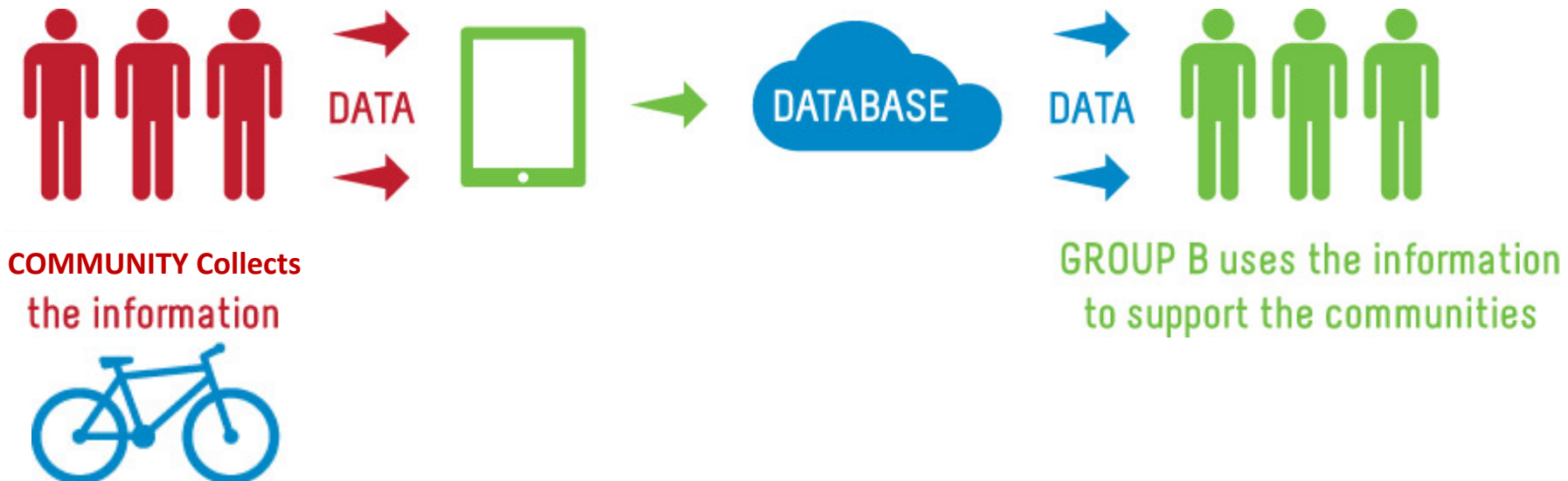
- Huge amount of material included with SEC
- New content added continuously
- Add corporate information, education, training, testing
- Enhance employee skills

❑ Aggregate Data

- With results from other leases and projects

**Upgrade Skills, Provide Additional Employment,
Save Cost, Enhance Reputation, Fulfill Commitments**

- ❑ NGOs need information. For example if a group is supplying water pumps; where are the sources of water, does it need purification, where is the closest local tradesperson to keep the pumps functioning. Pump delivery without all of these factors evaluated is not effective.



- ❑ Tablets enable collection of community health data for medical studies. Data is centralized meaning it is available to all health organizations.
- ❑ Local workers can gather individuals' information and history; data continues to be available as new groups are involved.
- ❑ Adding 'Bluetooth' medical devices to iPads for monitoring and data collection





**Bicycle
Empowerment
Centre**



**Skills
Empowerment
Centre**



**Global
Humanity
Exchange**



MOBILITY

EDUCATION

DATA

□ North America:

Pat Montani
pat@iempowerment.org
Tel. +1 604 902-3452
Skype: Patwhistler

Monty Richardson
monty@iempowerment.org
Tel. +1 705 888-2411
Skype: monty-ipv

□ Africa:

Rev. Nelson Owilli
Executive Director
Arid Development Program (ADP)
P.O. Box 12 ABIM DISTRICT
KARAMOJA UGANDA
Tel. +256 772 961 354
Skype: Owilli.nelson

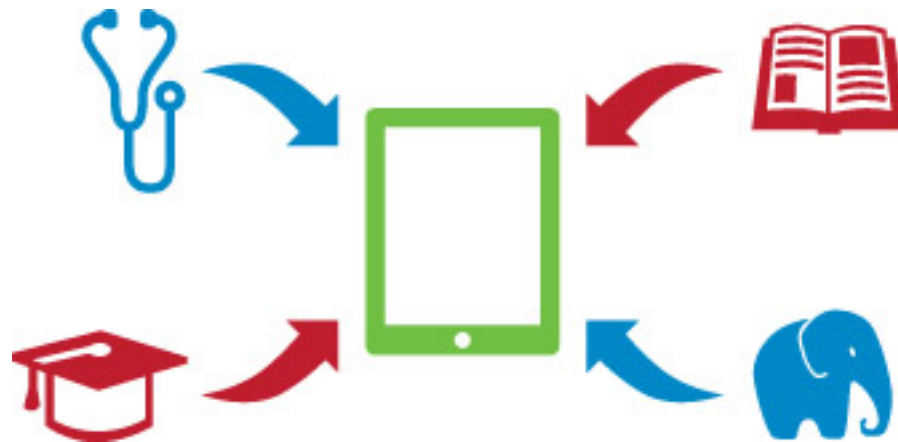
Nigel Reynolds
Tel: +264 814172922
www.facebook.com/multisportafrika
P.O. Box 415
Tsumeb, Namibia
Email: multisportafrika@gmail.com

THE BENEFITS OF A TABLET

An iPad or Android enables access to education.

See the following study to be awed by the power of self organized learning.

http://www.ted.com/talks/sugata_mitra_build_a_school_in_the_cloud.html



Empowerment thru education in B4H communities



DATA



DATA



COMMUNITY Collects
the information

GROUP B uses the information
to support the communities

iEmpowerment is a social enterprise dedicated to empowering people in the developing world with tools for mobility, education and health care so that they can create sustainable employment and continuous development.

iEmpowerment, thru technology, is enabling a global community where people in the developed world interact with people in the developing world to better each others' lives and opportunities.

iEmpowerment already has significant accomplishments in these areas, examples of which are iterated in this presentation, after the overview of the tools iEmpowerment has developed to make this happen.

The iEmpowerment philosophy and approach is to provide tools that empower people to take charge of their own situation to improve their own lives.

