

# ICMM's risk management journey

**Hannes Struyweg, Director, Health and Safety**  
31 October 2014

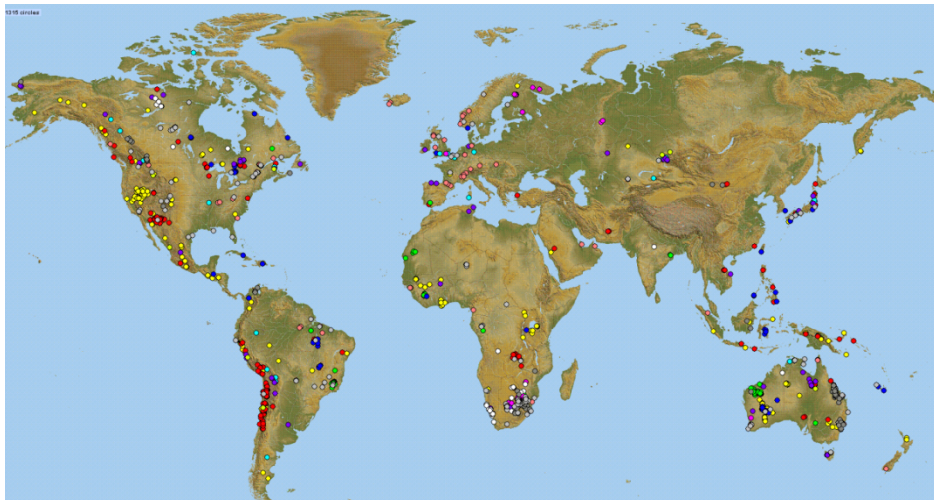


# ICMM at a glance



**CEO led**  
**21**  
**Company**  
**members**

**32**  
**Association**  
**members**



**Over 800 sites**  
**in 70 countries**

# Our vision and its fundamental implication



## ICMM Vision

leading mining and metals companies working together and with others to strengthen the contribution to sustainable development



## Fundamental implication

creating value for shareholders while simultaneously creating value for the communities and societies in which they operate



**Our role: a catalyst for improving environmental and social performance in the mining and metals industry**

# ICMM Principle 5



# Perceptions of health and safety in mining

## International Labour Organization (ILO):

- **Priority** is given to workers in the most hazardous sectors such as agriculture, construction, **mining**, or ship-breaking
- **Occupational deaths and injuries and work-related diseases** take **heavy toll** in developing countries where **large numbers of workers** are concentrated in the primary and extractive activities



# 1914: A performance legacy

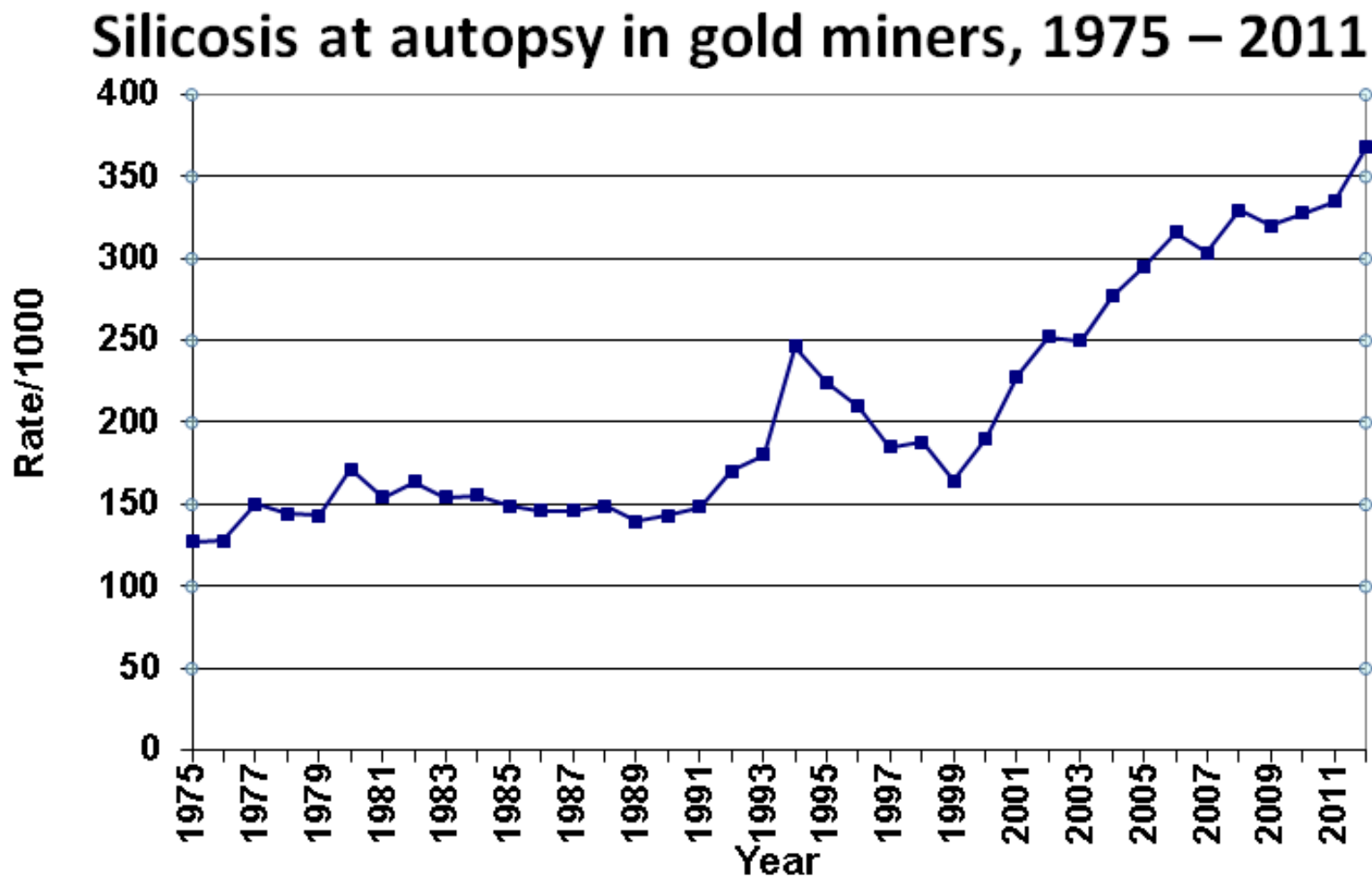
*“Two hundred thousand subterranean heroes who, by day and by night, for a mere pittance, lay down their lives to the familiar ‘fall of rock’ and who, at deep levels, ranging from 1,000 to 3,000 feet in the bowels of the earth, sacrifice their lungs to the rock dust which develops miners’ phthisis and pneumonia.”*



**Sol Plaatje**

First Secretary General of the African National Congress, 1914

# 2014: The legacy continues



# 2014: The legacy continues

## Italy court finds company owners guilty in asbestos case

13/02 14:06 CET



## SA court ruling opens door for claims against mines

By: Petronel Smit

Published: 3rd March 2011



JOHANNESBURG (miningweekly.co.za) - A court ruling has opened the door for claims against mines for an occupational health disease caused by asbestos.

The ruling has enabled mine workers to claim compensation for asbestos-related diseases.

**Thembekile Mankayi**, who sustained a civil claim of more than R2,6-million (ODIMWA), said the ruling was a landmark for workers.

The court had to decide on whether the mines were liable for the health of their employees, or whether a section of the law applied.

Mankayi died on Tuesday, two days after the ruling.

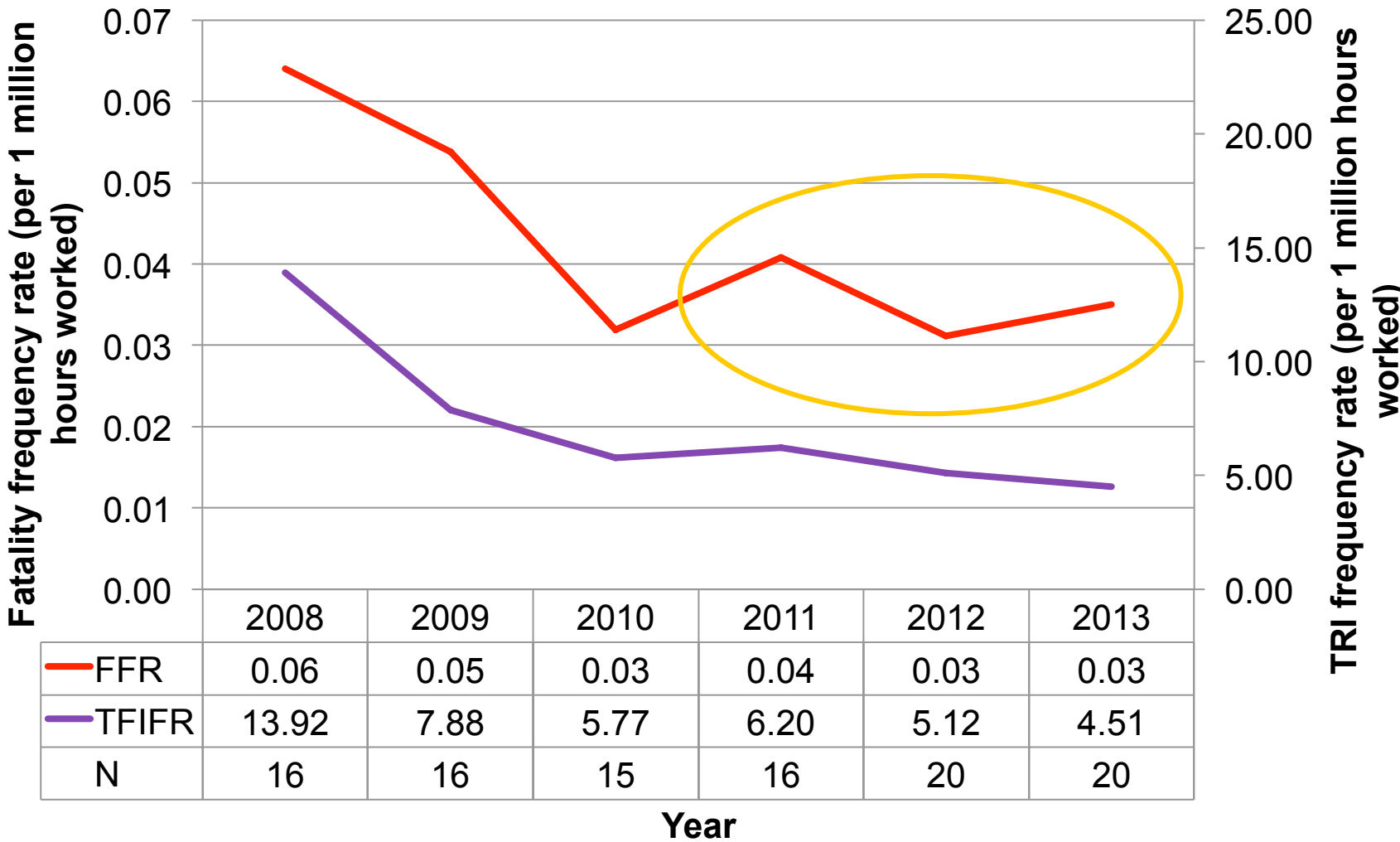
Attorney **Richard Spoor**, who represented Mankayi, said the ruling was a landmark for workers.

He said the ruling was a landmark for workers.

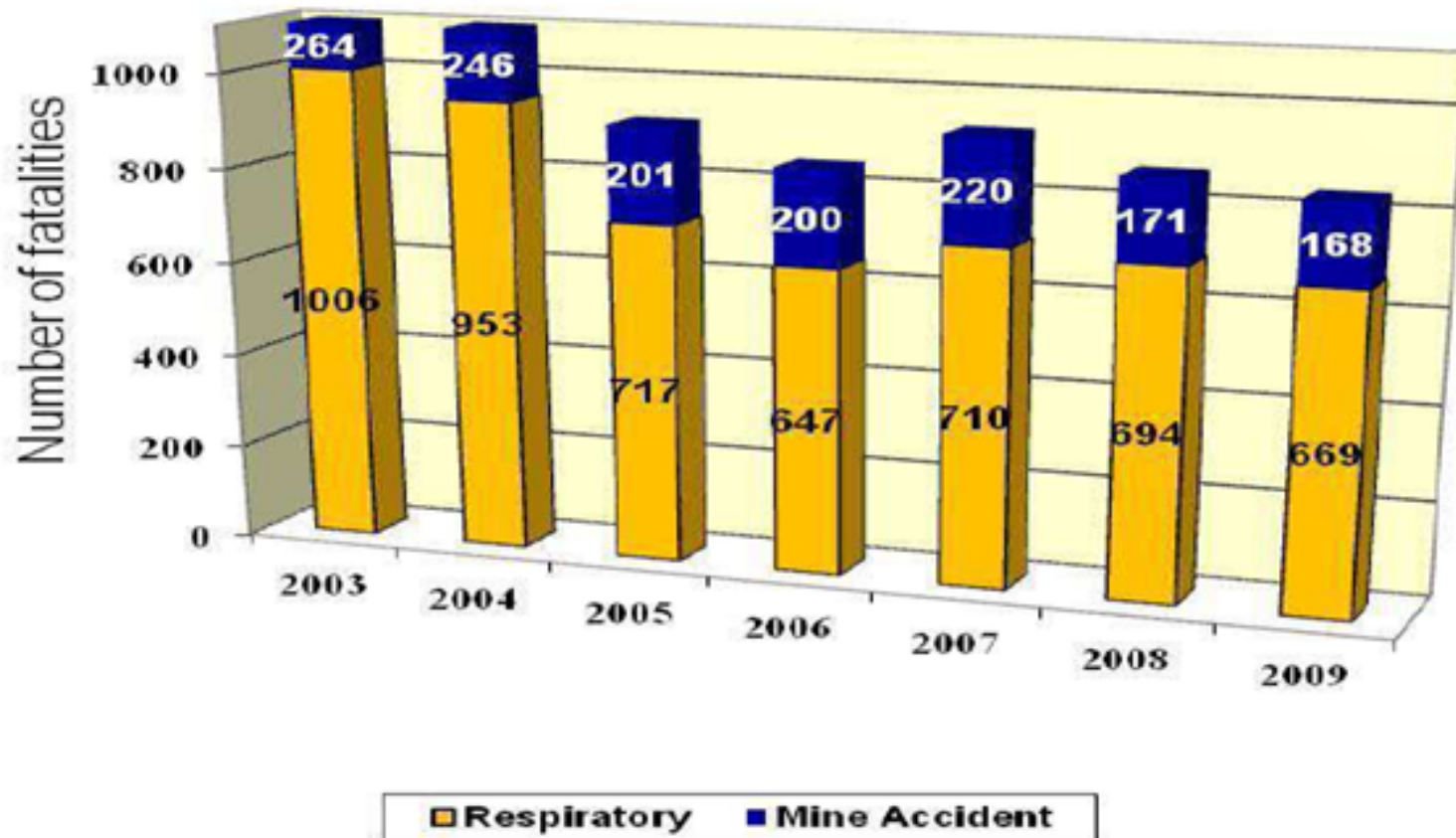




# ICMM companies' safety performance

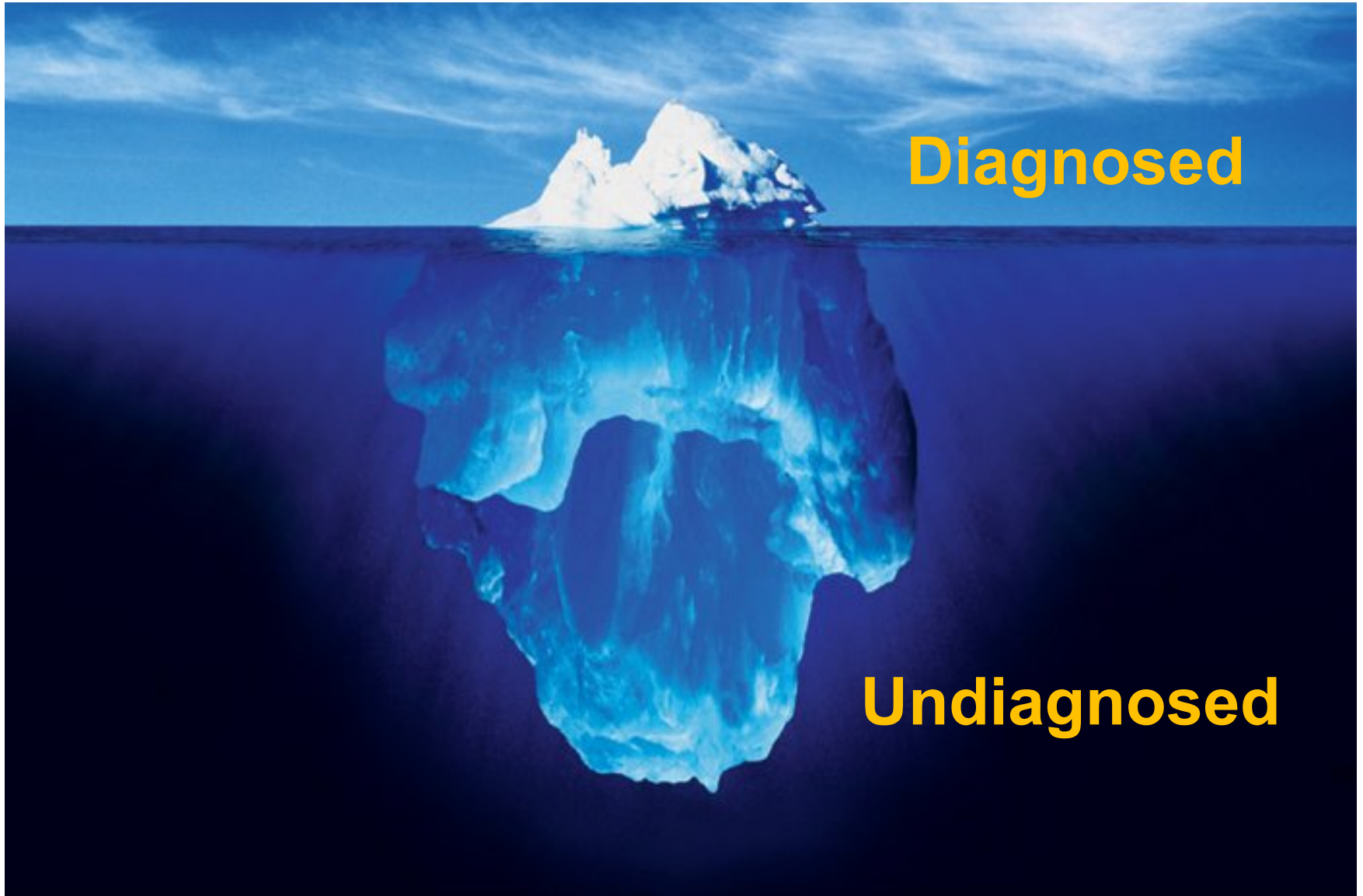


# Fatalities from occupational health



Data source: Mine Health & Safety Council, South Africa. Annual report 2011

# Contribution of inadequate medical services



# Future Trends - claims



## Silicosis claims settlement 2013

# Changing environment

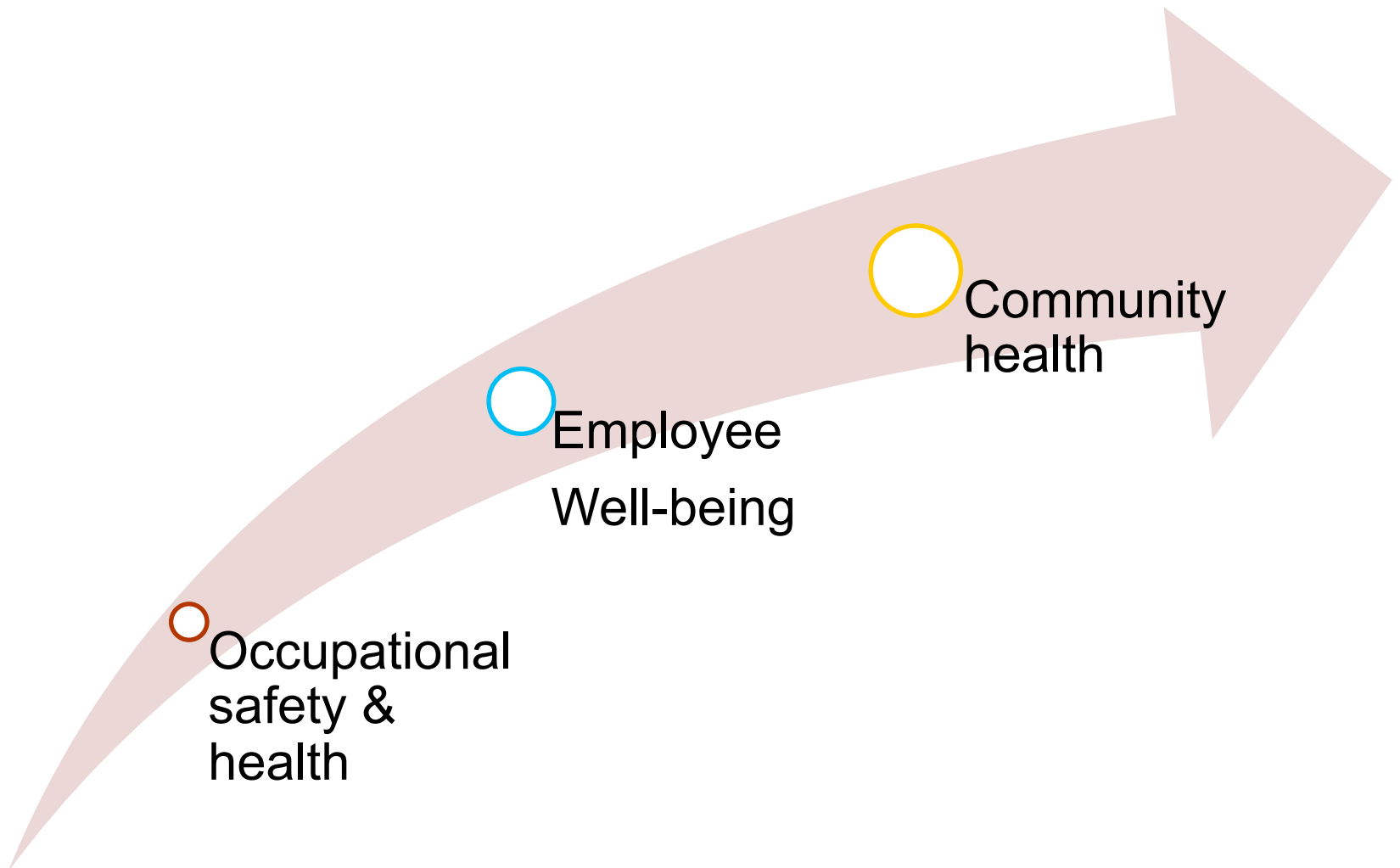
- **Ageing workforce (Chronic diseases)**
- **Drifting and diverse Occupational Exposure Level standards (Moving target)**
- **Strengthening compliance enforcement and additional regulation (Compliance versus performance)**
- **New technologies (Nano technology)**
- **Global economic integration (Migrant workers)**
- **GDP growth projections for developing countries (Improved medical services)**

# Ambition

**Zero over exposure on OELs that can lead to fatal occupational diseases or measurable incapacity**

# The solution lies in the review of our approach

## Integrated approach



# Learn from other industries

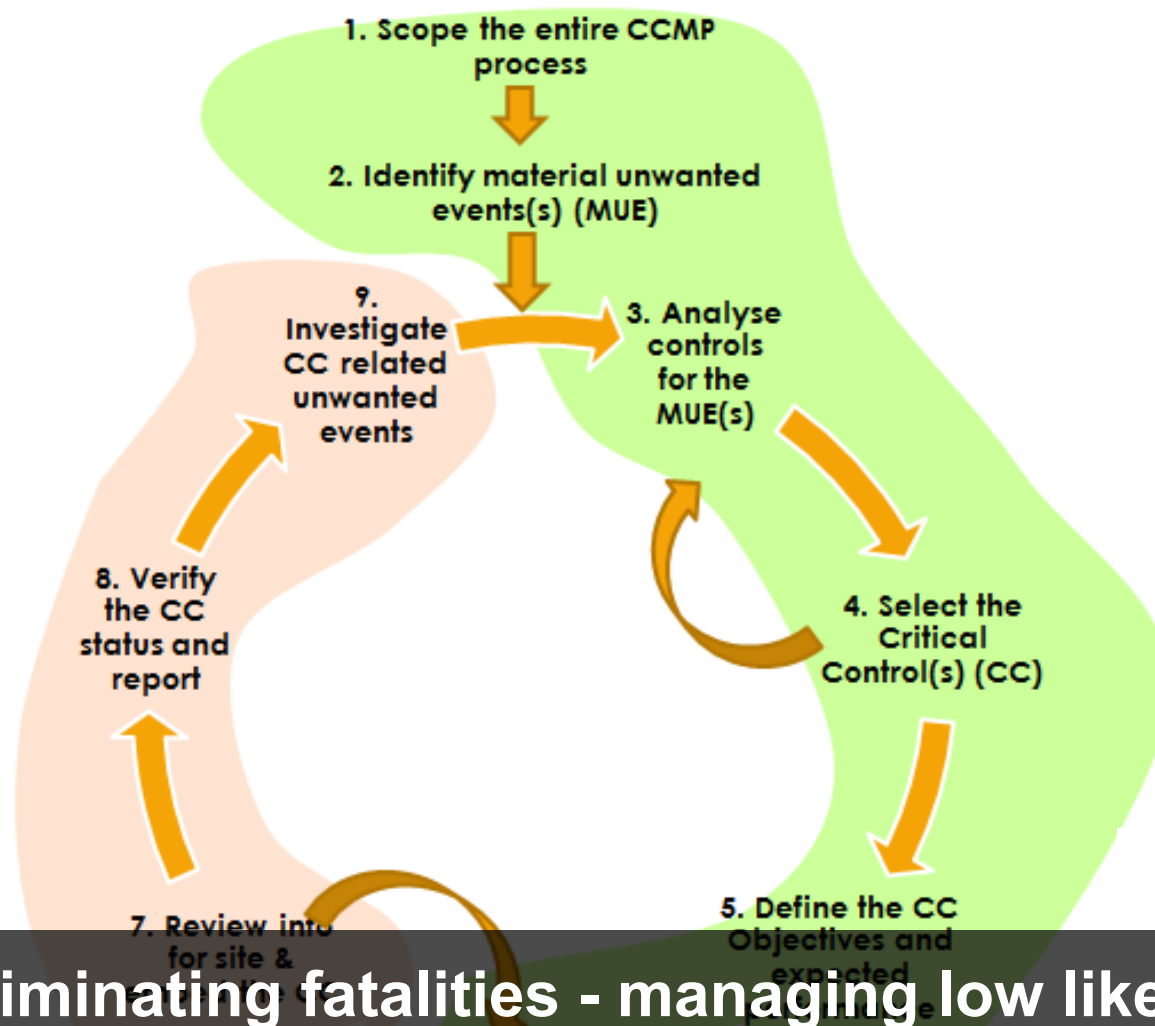
CASE STUDY, 2005:

To achieve an integrated health program NASA should:

- revamp employee health vision to improve linkage and support for NASA's core mission and goals
- integrate workplace safety with the occupational health function
- establish specific interfaces between health benefits design and in Human Resources and Occupational Health
- adopt management systems approach to actualize, sustain, and improve NASA's commitment and performance in employee health, safety, and well-being



# Review Approach: Focus on Critical Controls



**Eliminating fatalities - managing low likelihood, high consequence risks through critical control implementation, verification and assessment of effectiveness**

For further information:

[www.icmm.com](http://www.icmm.com)

[@icmm\\_com](https://www.instagram.com/icmm_com)

[info@icmm.com](mailto:info@icmm.com)